



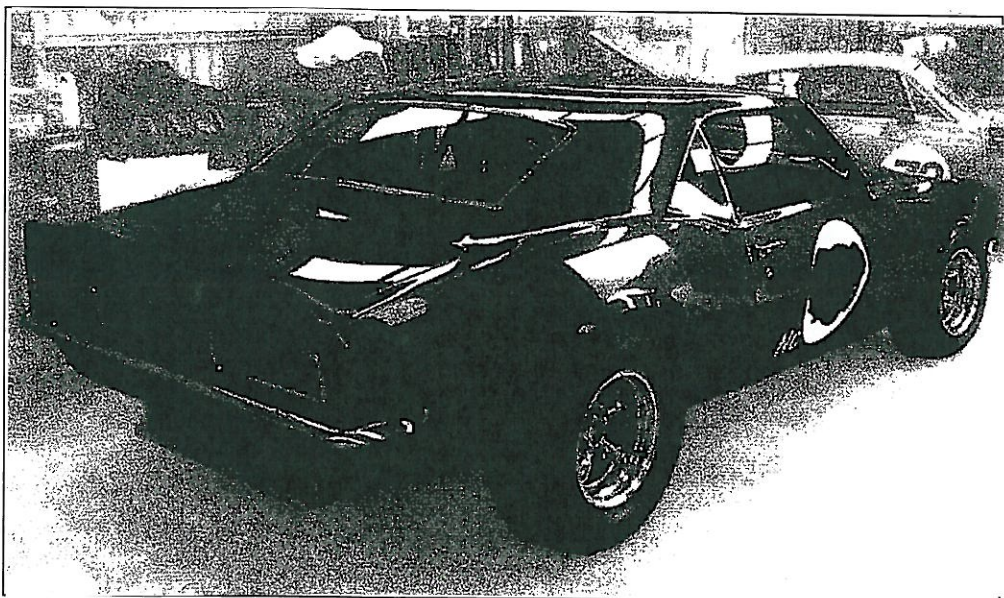
5TH CATEGORY

GROUP Nc

APPROVED VEHICLE SPECIFICATION

This form details the approved specifications of individual vehicle models in the 5th Category Historic car group. To be issued with an Historic Log Book, cars need to comply with these specifications, the physical appearance shown in the illustrations and the general historic rules as detailed in the current CAMS Manual of Motor Sport.

Make of Car: **Chevrolet** Model: **Camaro 396 Big Block**
Period of Original Manufacture: **1968**
CAMS Historic Group: **Nc**
FIA Recognition Number: **Not Recorded**
Date of Issue of this Document: **March 2004**



SECTION 1 – CHASSIS

1.1 CHASSIS FRAME

Description: Unitary construction **Period of Manufacture:**
Manufacturer: GM USA Jan 1968--Dec 1968
Chassis No. from: 124378N-300001
Chassis No. location: Left hand side top of dash
Material: Steel
Comments: Further modifications - Refer Group Nc regulations

1.2 FRONT SUSPENSION

Description: Double wishbone
Spring Medium: Coil
Damper Type: Tubular **Adjustable:** Permitted
Anti-Sway Bar: Originally fitted **Adjustable:** Permitted
Suspension Adjustable: Yes **Method:** by shims
Comments: Modifications permitted – refer Group Nc regulations

1.3 REAR SUSPENSION

Description: Live rear axle
Spring Medium: Semi-elliptic leaf springs
Damper Type: Hydraulic telescopic **Adjustable:** Permitted
Anti-Sway Bar: Yes, traction and panhard **Adjustable:** Permitted
Suspension Adjustable: Yes **Method:**
Comments: Modifications permitted – refer Group Nc regulations

1.4 STEERING

Type: Recirculating ball & nut **Make:** GM
Comments: Modifications permitted - Refer Group Nc regulations

1.5 BRAKES

	Front	Rear
Type:	Disc	Drum
Dimensions:	11 in	9.5 in
Area per brake:	247in ²	237 in ²
Materials of Disc/Drum:	Cast Iron	Cast iron
No. cylinders/wheel:	Four	One
Actuation:	Hydraulic	Hydraulic
Calliper Make:	Unspecified	Unspecified
Master Cylinder Make:	GM	Type: Double
Adjustable Bias:	Not originally fitted	
Servo Fitted:	Not originally fitted	

Comments: Brake modifications permitted – refer Group Nc regulations

SECTION 2 – ENGINE

2.1 ENGINE

Make:	GM		
Model:	Chevrolet Big Block Cast Iron		
No. Cylinders:	Eight (8)	Configuration:	Vee
Cylinder Block Material:	Cast Iron	Four Stroke	
Bore – Original:	103.98mm	Max. Allowed:	105.48mm
Stroke – Original:	95.5mm	Max. Allowed:	95.5mm
Capacity – Original:	6486cc	Max. Allowed:	6672cc
Main Bearing Caps:	Four (4) or (2) bolt Cast Iron		
Cooling Method:	Water-cooled		
Identifying marks:	Block # 3916323,3935440,3955272 only		
Comments:	Further modifications - Refer Group Nc regulations		

2.2. CYLINDER HEAD

Make:	General Motors		
No. valves/cylinder:	2	Inlet: 1	Exhaust: 1
No. ports total:	8	Inlet: 4	Exhaust: 4
No. of camshafts:	1	Location: Cyl block	Drive: Chain
Valve actuation:	Cam followers, pushrods and rockers		
Spark plugs/cylinder:	1		
Identifying marks:	Head# 3919842 only		
Comments:	Further modifications - Refer Group Nc regulations. Cast Iron or Aluminium Heads permitted.		

2.3 LUBRICATION

Method:	Wet sump	Oil tank location:	N/A
Dry sump pump type:	N/A	Location:	N/A
Oil cooler standard:	No	Location:	N/A
Comments:	Further modifications - Refer Group Nc regulations		

2.4 IGNITION

Type:	Battery, coil & distributor
Make:	Delco Remy
Comments:	Original battery location in rear of car. Ignition modifications permitted – refer Group Nc regulations

Engine Block Casting Numbers

#3782870	#3790721	#3791362	#3858174	#3858180
#3892657	#3903352	#3914660	#3914678	#3932386
#3932388	#395618	#3970010	#3970014	#3970016

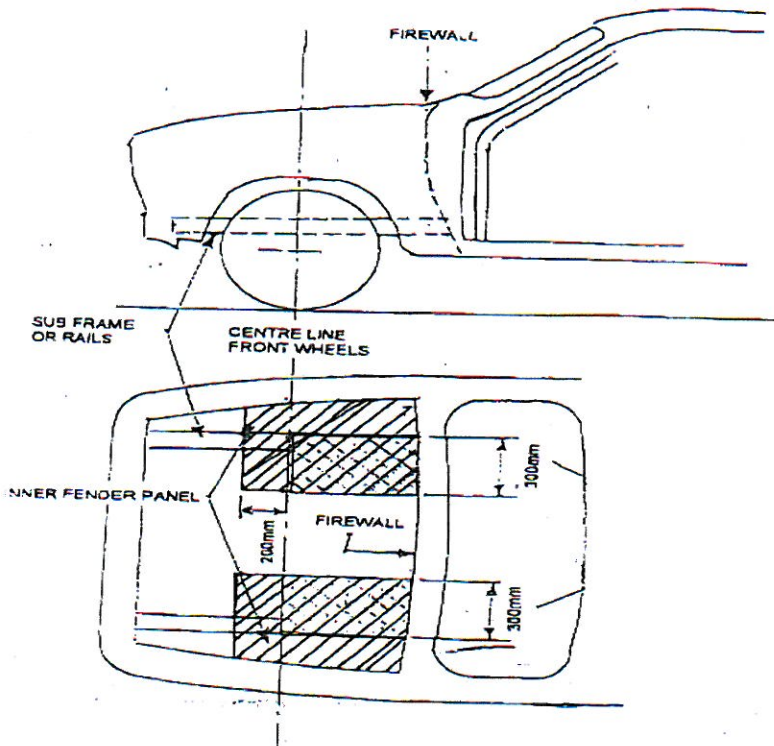
OR OTHERS BY SPECIFIC APPROVAL

Cylinder Head Casting Numbers

#3782461	#3890462	#3917291	#3917292	#3917293
#3927185	#3927186	#3927187	#3927188	#3932441
#3947041	#3973414	#3973487	#3986316	#3986339
	#3991492	#3998916	#3998993	

OR OTHERS BY SPECIFIC APPROVAL

SUB-FRAME REINFORCEMENT



IN PLAN VIEW ALL REINFORCEMENTS MUST BE WITHIN TWO RECTANGLES OF LENGTH BEING THE DISTANCE FROM 200mm IN FRONT OF THE FRONT WHEEL CENTRELINE TO FIREWALL AND THE WIDTH OF THE INSIDE OF THE BONNET OPENING TO 300mm MEASURED FROM INSIDE THE INNER FENDER PANEL

LOCATION OF SUB-FRAME REINFORCEMENTS

SPECIFICATIONS

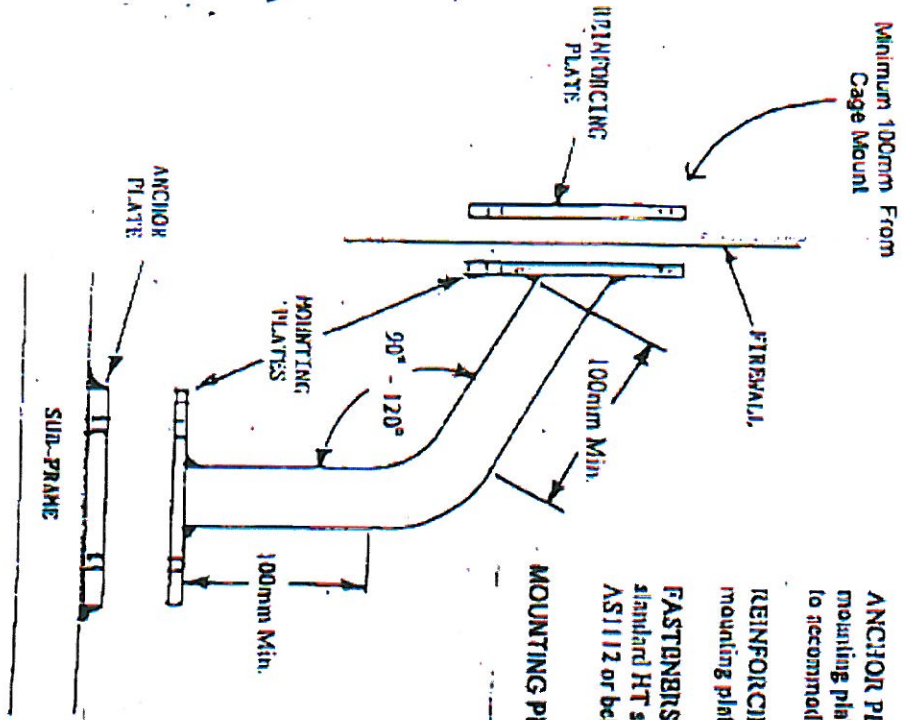
MATERIAL: Round mild steel tubing 38mm diam. X 2.5mm wall thickness.
BEND - of included angle between 90° and 120° must be incorporated with not less than 100mm of straight tube on either side of bend.

ANCHOR PLATE: Mild steel of 8mm minimum thickness matching the mounting plate and welded to the sub-frame and incorporating lapped holes to accommodate fasteners.

REINFORCING PLATE (upper mounting): Mild steel 3mm thick to match mounting plate and attached by bolts through firewall.

FASTENERS: Each mounting to incorporate at least two M8 size to ISO standard HT set screws to AS2465 or cap screws to AS1420 and nuts to AS1112 or better.

MOUNTING PLATES: Mild steel maximum dimension 75mm x 75mm



SUB-FRAME REINFORCEMENT

Eligibility officers be aware the main items are the bent brace and that the mount on the fire wall does not align with any part of the roll cage. The mounting plates can vary to incorporate a 90 degree plate at the top of the bulkhead.