



5TH CATEGORY - HISTORIC RACING

GROUP Nc

APPROVED VEHICLE SPECIFICATION

This form details the approved specifications of individual vehicle models in the 5th Category Historic car group. To be issued with an Historic Log Book, cars need to comply with these specifications, the physical appearance shown in the illustrations, the general historic rules and the specific regulations relative to the subject vehicle Group, as detailed in the current CAMS Manual of Motor Sport.

Make of Car: FORD

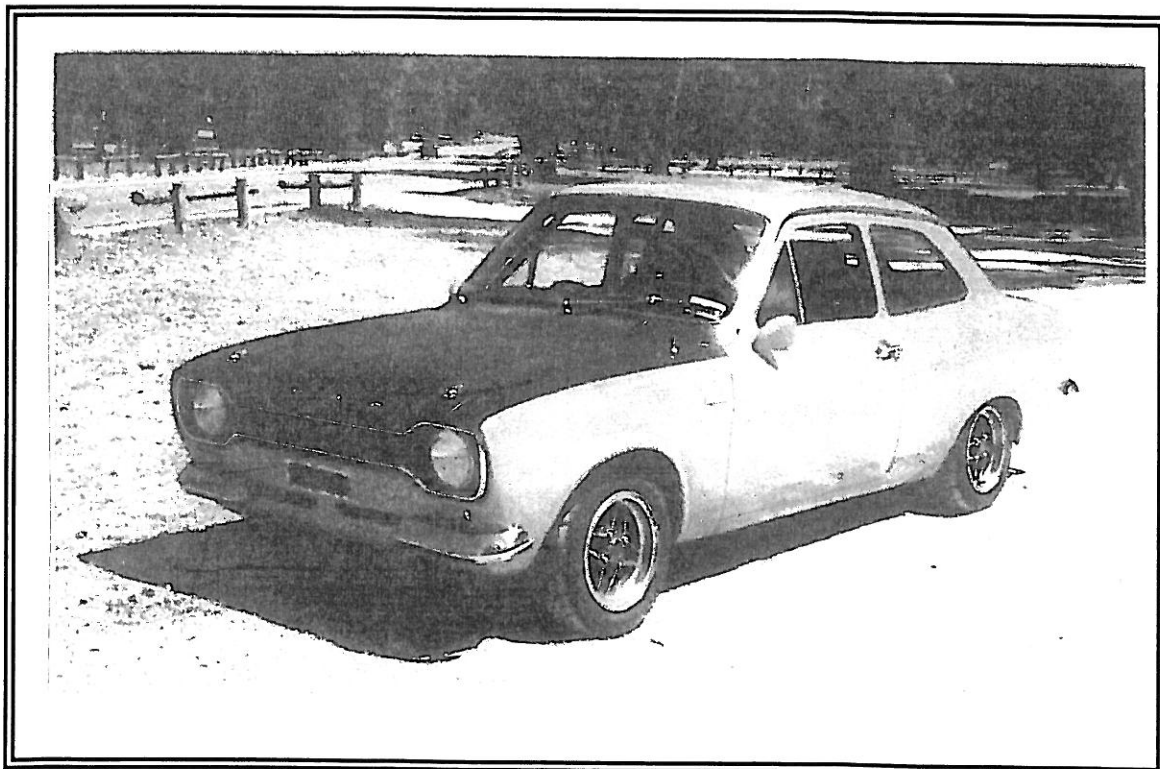
Model: ESCORT TWIN-CAM

Period of Original Manufacture: 1970 - 1973

CAMS Historic Group: Nc

Date of Issue of this Document: 27 May 2004

Updated: 2nd September 2008



SECTION 1 - CHASSIS

1.1 CHASSIS FRAME

Description: Unitary construction with body **Period of Manufacture:** 1970-73

Manufacturer: Ford Australia

Chassis no. from: Typical prefix CK49xxxxxxx

Chassis no. location: Top of RH suspension tower

Material: Steel

Comments: Assembled in Australia from CKD parts mainly of European origin with some local components

1.2 FRONT SUSPENSION

Description: Independent by McPherson Strut

Spring medium: Helical coil

Damper Type: Telescopic incorporated in strut **Adjustable:** No

Anti-sway bar: Integral with front suspension **Adjustable:** No

Suspension adjustable: Toe-in only **Method:** By tie-rod ends

Comments: Adjustable strut top mounts and dampers permitted. Spring platform location may be change; adjustable spring platforms are permitted.

1.3 REAR SUSPENSION

Description: Live rear axle

Spring medium: Semi-elliptic leaf springs

Damper type: Telescopic **Adjustable:** No

Anti-sway bar: Not fitted **Adjustable:**

Suspension adjustable: No **Method:**

Comments: Additional lateral and longitudinal linkages permitted; adjustable dampers permitted. Rear damper original upper mountings must be used; 'turrett' style upper mountings (where modification to body floor pan is necessary) are NOT permitted.

1.4 STEERING

Type: Rack and pinion **Make:** Cam Gears or Burman

Comments:

1.5 BRAKES

	Front	Rear
Type:	Disc	Drum
Dimensions:	244mm x 12.7mm	229mm x 45.5mm
Material of drum/disc	Cast iron	Cast iron
No. cylinders/pots per wheel:	2	1
Actuation:	Hydraulic	Hydraulic
Caliper: Make, Material, Type:	Girling cast steel 2-pot	
Master cylinder make: Girling Type:		Single cylinder

Adjustable bias: No

Servo Fitted: Yes

Comments: Use of twin master cylinders with adjustable bias permitted. Modifications limited to pedal box (body shell may not be modified) and bias adjustment may not be operable by driver when in driving position. Servo may be removed.

SECTION 2 - ENGINE

2.1 ENGINE

Make: Lotus/Ford
Model: Twin-cam
No. cylinders: 4
Cylinder Block-material: Cast iron
Bore - Original: 82.5mm
Stroke - original: 72.75mm
Capacity - original: 1558cc
Cooling method: Water cooled
Identifying marks: 681F-6105-A or 701M-6105-A with 'L' at motor mount boss
Comments:

Configuration: In line
Two/Four Stroke: Yes
Max. allowed: 84mm
Max. allowed: 72.75mm
Max. allowed: 1613cc

2.2 CYLINDER HEAD

Make: Lotus Ford
No. of valves/cylinder- 2
No. of ports total: 8
No. of camshafts: 2
Valve actuation: Direct from camshaft via buckets
Spark plugs/cylinder: 1
Identifying marks: A26E311 & WM9403 adjacent to gasket face but visible on assembled engine
Comments:

Inlet: 1
Inlet: 4
Location: Cyl Head
Exhaust: 1
Exhaust: 4
Drive: Roller Chain

2.3 LUBRICATION

Method(Wet/Dry Sump): Wet sump
Dry sump pump type: N/A
Oil cooler standard: Yes
Comments:

Oil tank location: N/A
Location: N/A
Location: Radiator support

2.4 IGNITION SYSTEM

Type: Coil & Distributor
Make: Lucas/Autolite

Comments: Modifications permitted. Refer Group Nc Regulations. Cars using ignition systems with the contact breaker points and condenser removed from the distributor (as per Group Nc Regulations Section (d) Ignition) may vary from point (d) i, in that the ignition module may be removed from the distributor and remote mounted on the inner mudguard or the firewall in the vicinity of the distributor and coil. The module should be mounted on a plate to allow a minimum gap of 10mm between the module and the plate mounting surface. The mounting must comply with points (d)ii and (d)iii of the Group Nc Regulations Section (d) Ignition.

2.5 FUEL SYSTEM

Carburettor: Make: 2 x Weber 40DCOE
Fuel injection Make: Supercharged(Yes/No):
Comments: Other carburettors permitted as per Group Nc Regulations Article 4

Model & Number:
Type:
Type

SECTION 3 - TRANSMISSION

3.1 CLUTCH

Make: Ford **Type:** **Diameter:** Diaphragm
No. of Plates: One
Actuation: Hydraulic
Comments:

3.2 TRANSMISSION

Type: Manual synchromesh **Model:** 2000-E
Make: Ford
No. forward speeds: 4 **Gearbox location:** Behind engine
Gearchange type and location: Remote change in extension housing
Case material: Cast iron with separate cast iron bell housing **Identifying marks:**

Comments:

3.3 FINAL DRIVE

Make: Ford **Model:** 'English' banjo type
F/R/All Wheel Drive Ratios: Rear 3.7:1 standard other ratios permitted
Differential: Free; torque biasing (LSD) permitted
Comments: Australian made Borg Warner integral carrier rear axle (ex late Escort Mk 1) not permitted

3.4 TRANSMISSION SHAFTS (EXPOSED)

Number: 1 **Location:** Gearbox to rear axle
Description: Single piece tubular steel with Hardy Spicer type U/J's
Comments:

3.5 WHEELS & TYRES

Wheel type - Original:	Conventional disc	Material - Original:	Steel
	Allowed: Alternative period style	Allowed:	Aluminium alloy
Fixture method:	Studs and nuts	No. studs:	4
	FRONT		REAR
Wheel dia. & rim width - Original:	13 x 5.5		13 x 5.5.
Allowed :	13 x 7		13 x 7
Tyre Section - Original:	165 x 13		165 x 13
Allowed :	215 x 13		215 x 13
Aspect ratio - minimum:	60%		60%
Comments:			

SECTION 4 - GENERAL

4.1 FUEL SYSTEM

Tank Location: RH corner of boot **Capacity:** 40 Lt
Fuel pump, type and location: Mechanical, on engine **Make:** Ford
Comments:

4.2 ELECTRICAL SYSTEM

Voltage: 12 **Generator/Alternator fitted:** Either fitted
Battery Location: LH corner of boot
Comments:

4.3 BODYWORK

Type: Unitary construction saloon **Material:** Steel
No. of seats: 4 **No. doors:** 2
Comments:

4.4 DIMENSIONS

Track - Front: 1270 mm **Rear:** 1295mm
Wheelbase: 2413mm **Overall length:** 3980mm
Dry weight: 825 Kg
Comments:

4.5 SAFETY EQUIPMENT : *Refer applicable Group Regulations*