



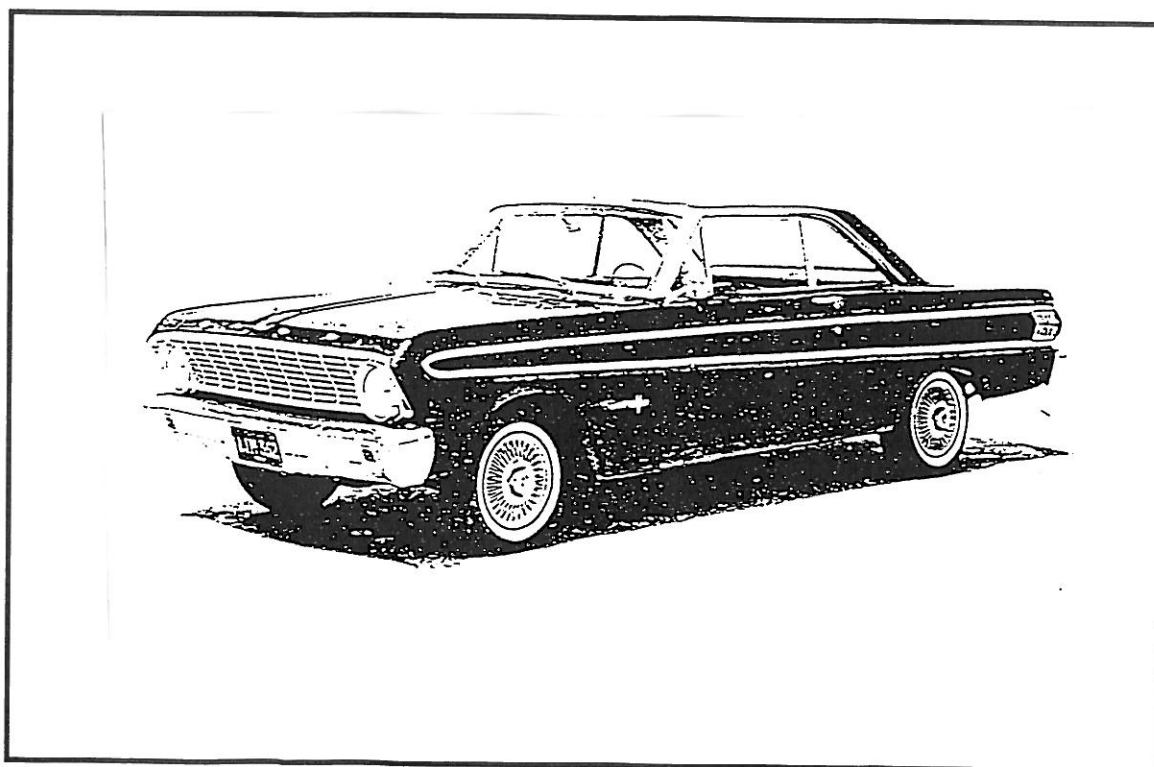
5TH CATEGORY - HISTORIC RACING

**GROUP Nb**

APPROVED VEHICLE SPECIFICATION

This form details the approved specifications of individual vehicle models in the 5th Category Historic car group. To be issued with an Historic Log Book, cars need to comply with these specifications, the physical appearance shown in the illustrations and the general historic rules as detailed in the current CAMS Manual of Motor Sport.

<b>Make of Car:</b>	Ford	<b>Model:</b>	Falcon Rally Sprint
<b>Period of Original Manufacture:</b>	1964		
<b>CAMS Historic Group:</b>	Nb		
<b>Date of issue of this document:</b>	17 July 1997		
<b>Updated:</b>	23 November 2009		



This form was issued without alteration or erasure.

## CHASSIS

### 1.1 CHASSIS FRAME

Description: Integral Period of Manufacture: Aug 1963-Aug 1964  
Manufacturer: Ford USA  
Chassis no. from: 4H13F-100001  
Chassis no. location:  
Material: Steel  
Comments: Cars originally LHD only.

### 1.2 FRONT SUSPENSION

Description: Independent by upper wishbone & lower TCA with forward link.  
Spring medium: Coil  
Damper Type: Hydraulic telescopic Adjustable: Permitted  
Anti-sway bar: Non-adjustable originally fitted Adjustable: Permitted  
Suspension adjustable: Yes Method: By eccentric TCA pivot  
Comments: Modifications permitted – refer Article 3.4 of Group Nb regulations.

### 1.3 REAR SUSPENSION

Description: Live rear axle  
Spring medium: Semi-elliptic leaf springs  
Damper type: Hydraulic telescopic Adjustable: Permitted  
Anti-sway bar: Not originally fitted Adjustable:  
Suspension adjustable: No Method:  
Comments: Modifications permitted – refer Article 3.4 of Group Nb regulations.

### 1.4 STEERING

Type: Recirculating ball Make: Ford  
Comments:

### 1.5 BRAKES

	Front	Rear
Type:	Disc	Drum
Dimensions:	292mm x 31.75mm	279.4mm x 52mm
Material of drum/disc:	Cast iron	Cast iron
No. cylinders/pots per wheel:	Four	One
Actuation:	Hydraulic	Hydraulic
Caliper Make, Material, Type:	Kelsey Hayes Cast iron	
Master cylinder make:	Kelsey Hayes	Type:
Adjustable bias:	Not originally fitted	
Servo Fitted:	Yes	
Comments:	Brake modifications permitted – refer Article 3.5 of Group Nb regulations.	

## SECTION 2 - ENGINE

### 2.1 ENGINE

Make: Ford  
Model: W289HP or W302 blocks permitted.  
No. cylinders: 8 Configuration: Vee  
Cylinder block material: Cast iron Two/Four Stroke: Four stroke  
Bore - Original: 101.76mm Max. allowed: 103.26mm  
Stroke - original: 72.9mm Max. allowed: 72.9mm  
Capacity - original: 4272cc Max. allowed: 4868cc  
Cooling method: Water cooled

#### Identifying marks:

Comments: Cylinder blocks with either 5 bolt or 6 bolt bell housing fixture permitted.  
It is permitted to use the Ford M-6010-BOSS 302 block with a rev limit of 7500rpm as a replacement for the Windsor 289 or 302 block.

### 2.2 CYLINDER HEAD

Make: Ford  
No. of valves/cylinder: 2 Inlet: 1 Exhaust: 1  
No. of ports total: 8 Inlet: 4 Exhaust: 4  
No. of camshafts: 1 Location: Cylinder block Drive: Chain  
Valve actuation: Camfollowers, pushrods & rockers.  
Spark plugs/cylinder: 1

#### Identifying marks:

Comments: The World Products Windsor Junior cylinder head may be used subject to the heads being in manufactures state save for refacing of the cylinder head gasket face and matching of the inlet ports by not more than 12mm from the port face and conditional upon individual application with the logbook endorsed and the engine sealed.

### 2.3 LUBRICATION

Method: Wet sump Oil tank location:  
Dry sump pump type: Location:  
Oil cooler standard: Yes Location: Behind radiator suppo panel LHS

#### Comments:

### 2.4 IGNITION SYSTEM

Type: Coil & distributor  
Make: Ford

#### Comments:

### 2.5 FUEL SYSTEM

Carburettor Make: Carter Model: CARA-9510-A-B  
Fuel injection Make: Type:  
Supercharged: No Type

Comments: Refer Article 3.2 of Group Nb regulations for carburettor freedoms.



## SECTION 4 - GENERAL

### 4.1 FUEL SYSTEM

Tank Location: Boot

Fuel pump type and location: Mechanical on engine

Capacity: 102 litres

Make: AC/Carter/Stewart-Warner

Comments:

### 4.2 ELECTRICAL SYSTEM

Voltage: 12V

Generator/Alternator fitted: Alternator

Battery Location: Engine compartment

Comments:

### 4.3 BODYWORK

Type: Closed touring car

Material: Steel

No. of seats: 5

No. doors: 2

Comments: FRP panels permitted – bonnet, front mudguards, door skins and boot. Front and rear bumpers of aluminium permitted as alternative to steel.

### 4.4 DIMENSIONS

Track - Front: Original 1397mm

Rear: Original 1249mm

Wheelbase: 2781mm

Overall length: 4612mm

Dry weight: 1100Kg

Comments:

4.5 SAFETY EQUIPMENT : Refer applicable Group Regulations