

CAMS

5TH CATEGORY - HISTORIC RACING

GROUP Nc

APPROVED VEHICLE SPECIFICATION

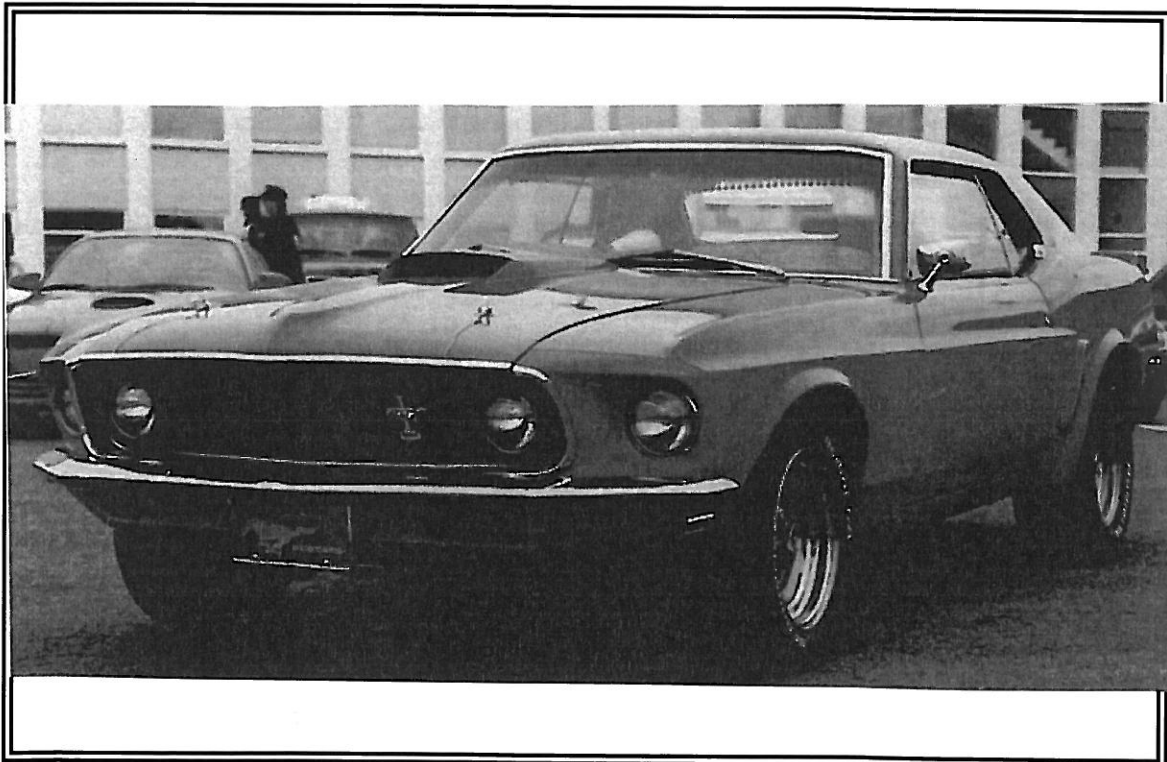
This form details the approved specifications of individual vehicle models in the 5th Category Historic car group. To be issued with an Historic Log Book, cars need to comply with these specifications, the physical appearance shown in the illustrations and the general historic rules as detailed in the current CAMS Manual of Motor Sport.

Make of Car: Ford **Model:** Mustang Fastback 351

Period of Original Manufacture: November 1968 – November 1969

CAMS Historic Group: Nc

Date of Issue of this Document: 13 July 2009



SECTION 1 - CHASSIS

1.1 CHASSIS FRAME

Description: Unitary Construction **Period of Manufacture:**1968-1969
Manufacturer: Ford
Chassis no. from: 9- 01- 100001
Chassis no. location: Left Side Engine Bay Panel
Material: Steel
Comments:

1.2 FRONT SUSPENSION

Description: Independent by Upper Wishbone
 O& Lower Track Control Arm
Spring medium: Coil Springs
Damper Type: Telescopic **Adjustable:** Yes
Anti-sway bar: Fitted **Adjustable:** No
Suspension adjustable: Yes **Method:** Caster by tension rods; camber by cam at TCA pivot.

Comments: Ride height and spring rate may be changed by variation of coil springs; change of sway-bar diameter permitted; dampers free subject to original mountings being used and period technology limitation.

1.3 REAR SUSPENSION

Description: Live Rear Axle
Spring medium: Leaf springs
Damper type: Telescopic **Adjustable:** Yes
Anti-sway bar: No
Suspension adjustable: No

Comments: Addition of sway bar, trailing links, Panhard rod or Watts linkage permitted. Dampers free subject to use of original mountings and period technology limitations.

1.4 STEERING

Type: Recirculating Ball **Make:** Ford
Comments:

1.5 BRAKES

| | Front | Rear |
|---------------------------------------|--------------------------------------|----------------|
| Type: | Disc | Drum |
| Dimensions: | 287mm x 23.8mm | 254mm x 44.4mm |
| Material of drum/disc | Cast Iron | Cast Iron |
| No. cylinders/pots per wheel: | 1 | 1 |
| Actuation: | Hydraulic | Hydraulic |
| Caliper: Make, Material, Type: | Kelsey Hayes – Ford floating caliper | |
| Master cylinder make: Ford | Type: | Tandem |
| Servo Fitted: Yes | | |

Comments: Components from other touring cars manufactured before 31/12/72 may be used subject to swept area limitation (note respective rear drum width* on three models, which must be honoured). Twin master cylinders permitted subject to no structural modification of body shell. Brake bias adjustment permitted; adjustment by driver in normal driving position not permitted.

SECTION 2 - ENGINE

2.1 ENGINE

| | | | |
|---------------------------------|-------------|-----------------------|---------|
| Make: | Ford | | |
| Model: | Windsor 351 | | |
| No. cylinders: | 8 | Configuration: | 90° V8 |
| Cylinder Block-material: | Cast Iron | Four Stroke | |
| Bore - Original: | 101.7mm | Max. allowed: | 103.2mm |
| Stroke - original: | 88.9mm | Max. allowed: | 88.9mm |
| Capacity - original: | 5771cc | Max. allowed: | 5951cc |
| Cooling method: | liquid | | |
| Identifying marks: | C90E- 6015B | | |
| Comments: | | | |

2.2 CYLINDER HEAD

| | | | | | |
|--------------------------------|----------|------------------|----------------|-----------------|--------------|
| Make: | Ford | | | | |
| No. of valves/cylinder- | | Inlet: | 1 | Exhaust: | 1 |
| No. of ports total: | 8 | Inlet: | 4 | Exhaust: | 4 |
| No. of camshafts: | 1 | Location: | Cylinder Block | Drive: | Roller chain |
| Valve actuation: | Pushrods | | | | |
| Spark plugs/cylinder: | 1 | | | | |

Identifying marks: D00E-351 or C90E -351 are the only acceptable original heads.

Comments: HTCEC Minute 9/12/05 It was resolved that the World Products Windsor Senior Head was an acceptable substitute for the original heads, subject to the WP head being unmodified save for port matching up to 12mm from the port outlet. The use of WP heads is to be recorded in the logbook and the engine sealed.

2.3 LUBRICATION

| | | | |
|-----------------------------|------------------|------------------|---------------------------------|
| Method: | Wet sump | | |
| Oil cooler standard: | No but permitted | Location: | May not be external to bodywork |
| Comments: | | | |

2.4 IGNITION SYSTEM

| | |
|------------------|--|
| Type: | Coil and conventional type distributor |
| Make: | Autolite |
| Comments: | Replacement distributors permitted, refer Group Nc regulations.. Regulations permit use of electronic rev. limiters. |

2.5 FUEL SYSTEM

| | | | | |
|---------------------|--|----------|---------------|------|
| Carburettor: | Make: | Autolite | Model: | 4300 |
| Comments: | Freedom of number and type of carburettor is allowed subject to the carburettor used being commercially available prior to 31/12/1972. | | | |

SECTION 3 - TRANSMISSION

3.1 CLUTCH

Make: Ford **Type:** Diaphragm **Diameter:** 254mm
No. of Plates: 1
Actuation: Mechanical
Comments:

3.2 TRANSMISSION

Type: 4 speed synchromesh
Make: Ford **Model:** "Top Loader"
No. forward speeds: 4 **Gearbox location:** Behind engine
Gearchange type and location: Remote floorshift
Case material: Cast Iron **Identifying marks:**
Comments:

3.3 FINAL DRIVE

Make: Ford **Model:** 9" ring gear
Wheel drive method: Rear
Differential: Both "Traction-lok" and Detroit "Locker" differentials were fitted as original equipment
Comments: Regulations permit freedom of differential action.

3.4 TRANSMISSION SHAFTS (EXPOSED)

Number: 1 **Location:** Gearbox to rear axle
Description: Single piece tubular steel shaft with hardy-Spicer type U/Joints
Comments:

3.5 WHEELS & TYRES

Wheel type: **Original:** Pressed steel
 Allowed: Pressed steel or period alloy
Fixture method: Studs & nuts (5)
Wheel dia. & rim width
 Original: 15" x6"
 Allowed: 15" x 8"
Aspect ratio - minimum: 60%
Comments:

SECTION 4 - GENERAL

4.1 FUEL SYSTEM

Tank Location: Under rear of car – forms boot floor

Capacity: 75 Litres

Fuel pump, type and location: Both mechanical (engine mounted) and electric fuel pumps were fitted as original equipment.

Comments:

4.2 ELECTRICAL SYSTEM

Voltage: 12 Volts

Alternator fitted

Battery Location:

Engine compartment or boot

Comments:

4.3 BODYWORK

Type:

Closed

Material:

Steel

No. of seats:

4

No. doors:

2

Comments:

4.4 DIMENSIONS

Track - Front:

1499mm

Rear:

1486mm

Wheelbase:

2743mm

Overall length: 4770mm

Dry weight:

1305 Kg

Comments:

4.5 SAFETY EQUIPMENT

Fire extinguisher required

Seat belt required

Rollbar required

Electrical cut off switch required

Safety fuel tank optional

GH-Ford Mustang 351.