



5TH CATEGORY - HISTORIC RACING

**GROUP Nb**

APPROVED VEHICLE SPECIFICATION

This form details the approved specifications of individual vehicle models in the 5th Category Historic car group. To be issued with an Historic Log Book, cars need to comply with these specifications, the physical appearance shown in the illustrations and the general historic rules as detailed in the current CAMS Manual of Motor Sport.

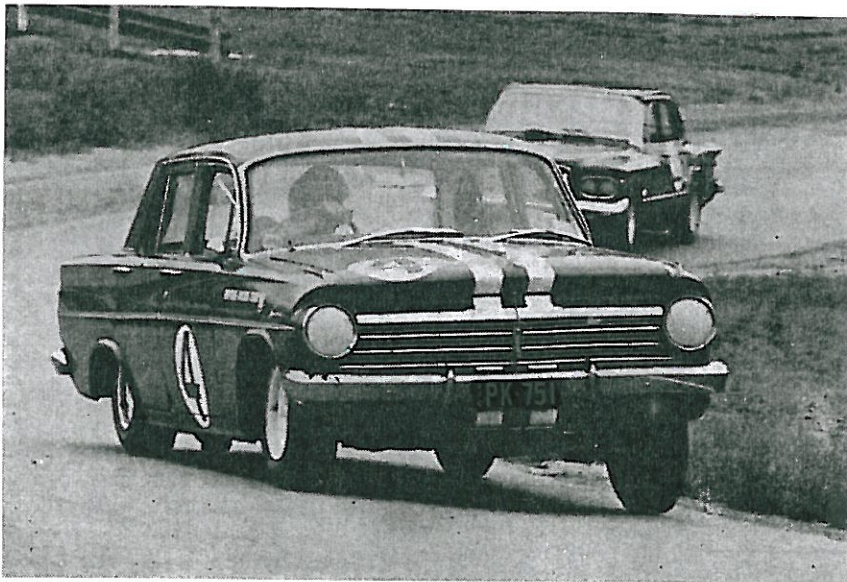
**Make of Car:** Holden

**Model:** EH

**Period of Original Manufacture:** 1963-1964

**CAMS Historic:** Group Nb

**Date of Issue of this Document:** 12 May 2009



## SECTION 1 - CHASSIS

### 1.1 CHASSIS FRAME

**Description:** Unitary construction **Period of Manufacture:**  
1963 -1964

**Manufacturer:** General Motors -Holden

**Chassis no. from:** EH 1010MXXXX EH215 EH225 EH235

**Chassis no. location:** Plate on lhs of firewall & stamped on rhs fender.

**Material:** Steel

**Comments:** Modifications permitted – Refer Group Nb regulations

### 1.2 FRONT SUSPENSION

**Description:** Independent by upper & lower control arms

**Spring medium:**

**Damper Type:** Telescopic **Adjustable:** Permitted

**Anti-sway bar:** Fitted **Adjustable:** No

**Suspension adjustable:** Caster & camber Yes **Method:** Eccentric bushes

**Comments:** Modifications permitted – refer Group Nb regulations

### 1.3 REAR SUSPENSION

**Description:** Live rear axle

**Spring medium:** Leaf springs

**Damper type:** Telescopic **Adjustable:** Permitted

**Anti-sway bar:** No **Adjustable:** Permitted

**Suspension adjustable:** No **Method:**

**Comments:** Modifications permitted – refer Group Nb regulations

### 1.4 STEERING

**Type:** Recirculating ball **Make:** Holden

**Comments:**

### 1.5 BRAKES

	Front	Rear
<b>Type:</b>	Drum	Drum
<b>Dimensions: Original</b>	229mm x 44.4mm	229mm x 44.4mm
<b>Permitted</b>	229mm x 57.2mm	229mm x 57.2mm
<b>Material of drum/disc</b>	Cast Iron	Cast Iron
<b>No. cylinders/pots per wheel:</b>	1	1
<b>Actuation:</b>	Hydraulic	Hydraulic
<b>Caliper: Make, Material, Type:</b>		
<b>Master cylinder make:</b> Holden	Girlock/PBR	<b>Type:</b> Single cylinder

**Adjustable bias:** Dual master cylinders are permitted.

**Servo Fitted:** Permitted.

**Comments:** It is permitted to fit EH panel van/ute brakes, 229mm x 57.2mm.  
Refer Group Nb regulations for other permitted modifications.

## SECTION 2 - ENGINE

### 2.1 ENGINE

**Make:** Holden  
**Model:** 149 Cu.In. & 179 Cu.In.  
**No. cylinders:** 6 **Configuration:** In line  
**Cylinder Block-material:** Cast Iron **Two/Four Stroke:** 4  
**Bore - Original:** 149: 82.6mm 179: 90.5mm **Max. allowed:** 149: 84.1mm  
76.20 179: 92 mm.  
**Stroke - original:** 76.2mm **Max. allowed:** Refer comments  
**Capacity - original:** 149: 2242cc **Max. allowed:** Refer comments  
179: 2933cc  
**Cooling method:** Liquid  
**Identifying marks:**

**Comments:** Bore may be increased and stroke reduced provided capacity remains within 2600cc (149) and 3000cc (179). If original stroke is maintained, the bore may be increased by 1.5mm and the 179 model is deemed to remain in the 3000cc class..

### 2.2 CYLINDER HEAD

**Make:** Holden  
**No. of valves/cylinder:** 2 **Inlet:** 1 **Exhaust:** 1  
**No. of ports total:** 9 **Inlet:** 3 **Exhaust:** 6  
**No. of camshafts:** 1 **Location:** Cylinder block **Drive:** Gear  
**Valve actuation:** Pushrods & rockers .  
**Spark plugs/cylinder:** 1  
**Identifying marks:**

**Comments:** Modifications permitted – refer Group Nb regulations.

### 2.3 LUBRICATION

**Method:** Wet sump **Oil tank location:**  
**Dry sump pump type:** **Location:**  
**Oil cooler standard:** No **Location:**  
**Comments:**

### 2.4 IGNITION SYSTEM

**Type:** Coil & Distributor  
**Make:** Bosch or Lucas  
**Comments:** Modifications permitted – refer Group Nb regulations.

### 2.5 FUEL SYSTEM

**Carburettor: Make:** Stromberg Holden **Model:** BXUV-2 or BXV-2  
Bendix BXV  
**Fuel injection Make:** **Type:**  
**Supercharged:** No **Type:**  
**Comments** Refer Group Nb regulations for carburettor freedoms.  
//

## SECTION 3 - TRANSMISSION

### 3.1 CLUTCH

**Make:** Holden **Type:** Diaphragm /Dry **Diameter:** 203mm  
 plate  
**No. of Plates:** 1  
**Actuation:** Hydraulic  
**Comments:**

### 3.2 TRANSMISSION

**Type:** 3-speed – synchro on 2 speeds.

**Make:** Holden

**No. forward speeds:** 3

**Gearbox location:** Behind engine

**Gearchange type and location:**

Steering column

**Case Material:** Cast Iron

**Identifying marks:**

**Comments:**

### 3.3 FINAL DRIVE

**Make:** Holden **Model:** Banjo type Hypoid semi-floating  
 Live axle .

**Wheel drive method:** Rear

**Ratios:** 3.36:1

**Differential:** Holden

**Type:** Free

**Comments:** Modifications permitted – refer Group Nb regulations.

### 3.4 TRANSMISSION SHAFTS (EXPOSED)

**Number:** 1 Gearbox to rear axle.

**Description:** Tubular with Hardy Spicer type U/Joints

**Comments:**

### 3.5 WHEELS & TYRES

**Wheel type - Original:** Pressed steel **Material :- Original:** Steel

**Allowed:** Period alloy **Allowed:** Period alloy

**Fixture method:** Studs & nuts

**No. studs:** 5

**FRONT**

**REAR**

**Wheel dia. & rim width -**

**Original:** 13" x 4.5" 13" x 4.5"

**Allowed :** 13" x 5.5" 13" x 5.5"

**Tyre Section -**

**Original:** 165/65 13 165/65 13

**Allowed :** 205/60 13 205/60 13

**Aspect ratio - minimum:** 60%

**Comments:** Tyre chosen must be on Group N Tyre List and suit the rim used.

## **SECTION 4 - GENERAL**

### **4.1 FUEL SYSTEM**

**Tank Location:** Boot **Capacity:** 42 Litres  
**Fuel pump, type and location:** Mechanical,Cylinder **Make:** AC  
block

**Comments:** Modifications permitted – refer Group Nb regulations.

### **4.2 ELECTRICAL SYSTEM**

**Voltage:** 12V **Generator/Alternator fitted:** Alternator.  
**Battery Location:** Engine compartment **Battery may be relocated.**  
**Comments:**

### **4.3 BODYWORK**

**Type:** Closed **Material:** Steel  
**No. of seats:** 5 **No. doors:** 4

**Comments:**

### **4.4 DIMENSIONS**

**Track - Front:** 1384mm **Rear:** 1384mm  
**Wheelbase:** 2667mm **Overall length:** 4511mm  
**Dry weight:** 1120 Kg.

**Comments:**

**4.5 SAFETY EQUIPMENT :** Refer applicable Group Regulations