

Modified Article	Date of Application	Date of Publication
Article (I)	01/01/2019	01/01/2019

*Each automobile in a circuit race (except a superkart) shall, of necessity, in addition to the provisions of Schedules A and B, be fitted:*

- (a) only with laminated glass in any glass windscreen. Windows, including windscreens, shall not be coloured or tinted unless fitted as standard to a production automobile and compliant with AS2080;
- (b) with wheels and tyres in compliance with Schedule E. No tyre shall have been retreaded, recapped, repaired or re-conditioned in any way;
- (c) with bodywork which generally encloses (when viewed from above and each side) the chassis frame and basic mechanical elements, from the front of the automobile rearwards at least as far as a transverse vertical plane immediately to the rear of the driver's seat;
- (d) with not fewer than two functional rear vision mirrors each of at least 50cm<sup>2</sup>;
- (e) with a fuel tank as specified in Schedule N;
- (f) only with such replacement seat which in a closed automobile first registered with CAMS after 1 January 1980, and in which the relevant regulations permit the replacement of the driver's seat and which:
  - (i) incorporates a head restraint; and
  - (ii) does not incorporate adjustment of the rake of the squab.

**NOTE:** The use of a seat to the FIA 8862-2009 Advanced Racing Seat standard is recommended. Where a seat to this standard is required, the seat shall be used with the seat mount bearing the same FIA homologation number unless an alternative seat mount has been homologated by CAMS, in which case that seat mount may be used

- (g) with a seat mount/support fixed as per the following:
  - (i) Where an automobile is in compliance with the Australian Design Rules (ADR) for seat mountings, on the anchorage points for fixing seats used on the original automobile; or
  - (ii) On anchorage points for fixing seats in conformity with Drawing C-1; or
  - (iii) Where a seat is affixed to an un-reinforced section of the floor pan, each attachment point shall be reinforced by the use of a plate of not less than 40cm<sup>2</sup>. The minimum thickness of each support and counterplate shall be 3 mm for steel and 5 mm for light alloy material. A seat mount/support must be attached to the shell/chassis using at least 4 mounting points per seat using 8.8 grade bolts with a minimum diameter of 8mm with counterplates, in compliance with Drawing C-2. An anchorage point for fixing a seat may be in compliance with Drawing C-1. A cross member may be welded in place instead of fixing by bolts providing the connection is fully welded around the circumference.
- (h) with a window net as required by Schedule I.

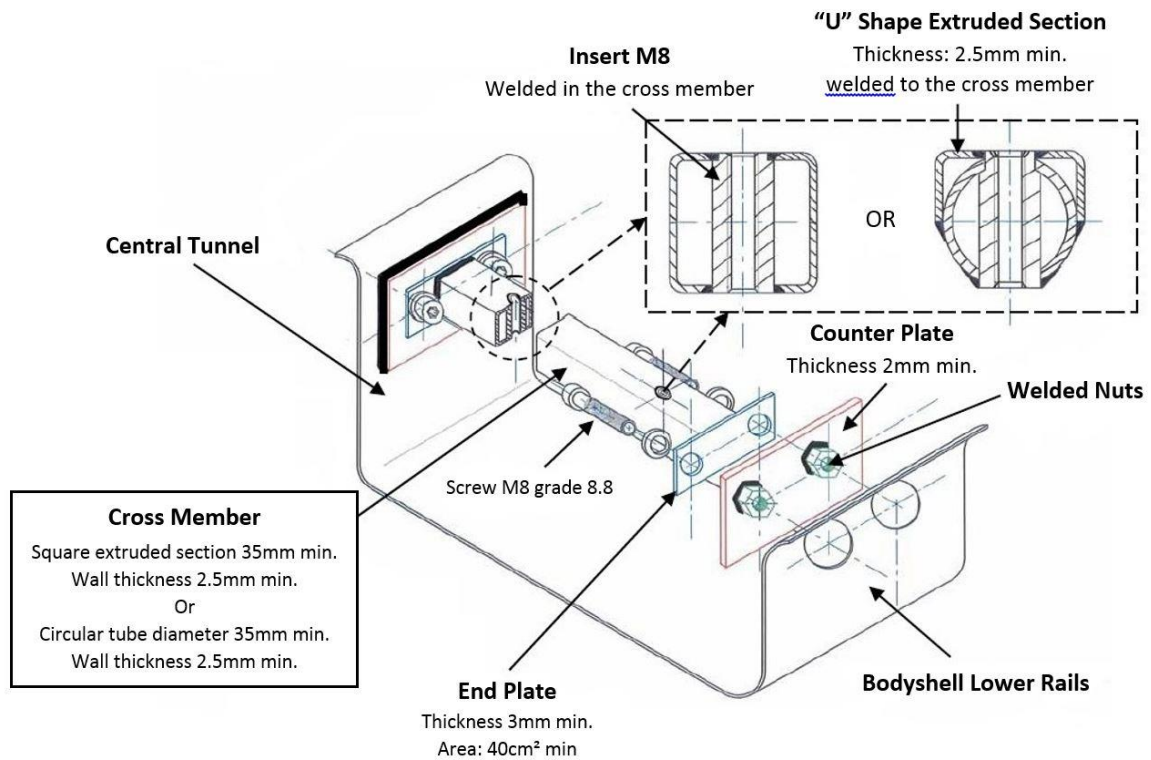
*Each automobile in a circuit race (except a superkart) shall, of necessity, also be required to comply with the following:*

- (i) On each automobile, other than those of the 5th Category, fitted with an electric fuel pump, the pump power supply must cut off in a maximum of six seconds after the engine stops;
- (j) Each automobile of the 2nd and 3rd Category shall be equipped with a battery isolation (master) switch which isolates the battery and stops the engine, and:
  - (i) it shall be capable of being operated by the driver in his normal seated position;
  - (ii) there shall be a second switch, or a remote means of operating the main switch, from the vicinity of the base of the A pillar on the driver's side or, for an automobile with no A pillar, in a comparable position; and

- (iii) each external device shall be clearly marked by a symbol showing a red spark in a white-edged blue triangle of minimum edge length 150mm;
- (k) For a non-road-registered series production automobile any cable-operated bonnet or engine cover release mechanism must be disabled and replaced with at least two fastening systems in accordance with Schedule B;
- (l) As of 01/01/2019 it is highly recommended that each automobile be fitted with a rearward facing red warning lamp (rain light) which must be clearly visible from the rear and mounted not more than 100mm from the centreline of the automobile. Each lamp must:
  - (i) be of at least 15 watts or an LED lamp with FIA and/or CAMS approval may be used and may strobe;
  - (ii) have a minimum surface area of 20cm<sup>2</sup> and a maximum surface area of 140cm<sup>2</sup>; and
  - (iii) be able to be switched on by the driver when normally seated in the automobile.

NOTE: this requirement for a rearward facing red warning lamp (rain light) will be compulsory for each automobile as of 01/01/2020.

**DRAWING C-1**



**DRAWING C-2**

